



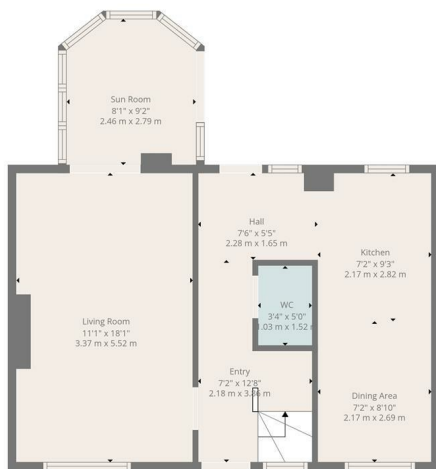
HEMMINGS HOMES

OFFERS OVER

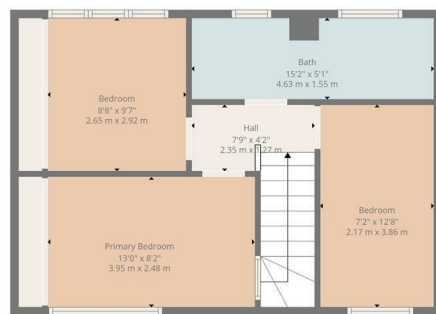
£310,000

Curriehill Road

Currie, EH14 5NS



Ground Floor

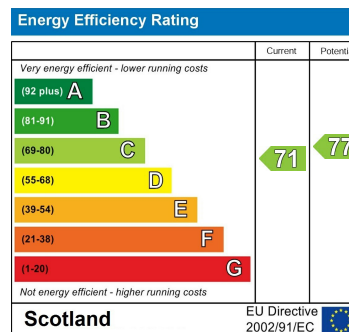


1st Floor



TOTAL: 1012 sq. ft, 94 m²
 Ground floor: 541 sq. ft, 50 m², 1st floor: 471 sq. ft, 44 m²
 EXCLUDED AREAS: WALLS: 104 sq. ft, 10 m²

Floor Plan Created By CalcuApp. Measurements Deemed Highly Reliable But Not Guaranteed.



Agents Note: Whilst every care has been taken to prepare these particulars, they are for guidance purposes only. All measurements are approximate and are for general guidance purposes only and whilst every care has been taken to ensure their accuracy, they should not be relied upon and potential buyers/tenants are advised to recheck the measurements



OFFICE ADDRESS
 8 Deer Park Avenue
 Livingston
 EH48 8AF

OFFICE DETAILS
enquiries@hemmingshomes.co.uk
hemmingshomes.co.uk